

FOR LRST40 LIFTGATES ONLY
 THIS GUARD CONFORMS TO DOT STANDARDS: FMVSS STANDARD NO.
 223, REAR IMPACT GUARDS (571.223).

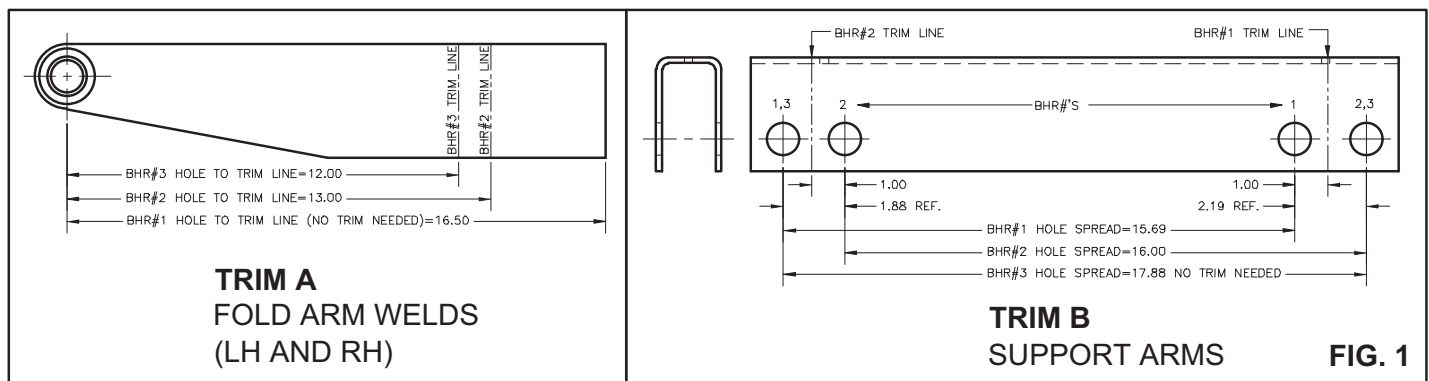
HIEMAN TAILGATES, INC. **KIT 221** **REAR IMPACT** **GUARD** **LRST 40** **PART NO. 3722**

REAR IMPACT GUARD INSTALLATION

- STEP 1. Determine the BHR# from chart below, based on "A" dimension used to locate the trunnion tube during LRST40 liftgate install. See figure 4.
- STEP 2. Trim the fold arms as shown under Trim A in figure 1. On BHR# 1 there is no trimming required for this step. Trim the left and right hand fold arms.
- STEP 3. Trim the support arms as shown under Trim B in figure 1. Mark the trim line for the specific BHR# as shown below. On BHR# 3, there is no trimming required.

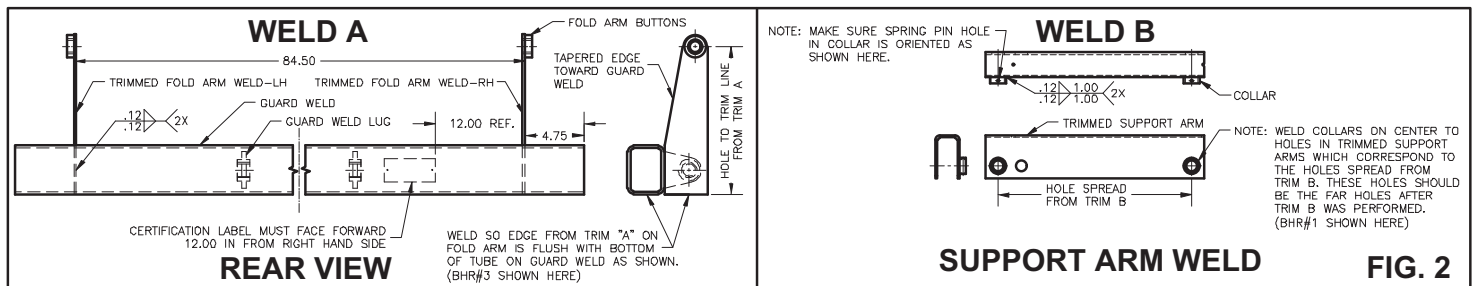
"A" DIM USED	BED HEIGHT RANGE	BHR#
27.00	51.00 min. fully loaded—56.00 max. unloaded	1
25.50	49.00 min. fully loaded—51.88 max. unloaded	2
22.00	46.00 min. fully loaded—49.88 max. unloaded	3

TRIM OPERATIONS



- STEP 4. Tack weld the trimmed fold arms to the guard weld as shown under Weld A in figure 2.
- STEP 5. Tack weld the collars to the trimmed support arms as shown under Weld B in figure 2.
- STEP 6. Assemble the guard weld/fold arm weld to the lift arm using the pin with the two holes and the spring pins supplied as shown in figure 3.
- STEP 7. Assemble the support arm/collar welds between the guard weld lugs and the trunnion asm lugs using the pins with the flats on the end and the spring pins supplied as shown in figure 3. The collars welded to the support arms should face inward.

WELD OPERATIONS



ASSEMBLY OPERATIONS

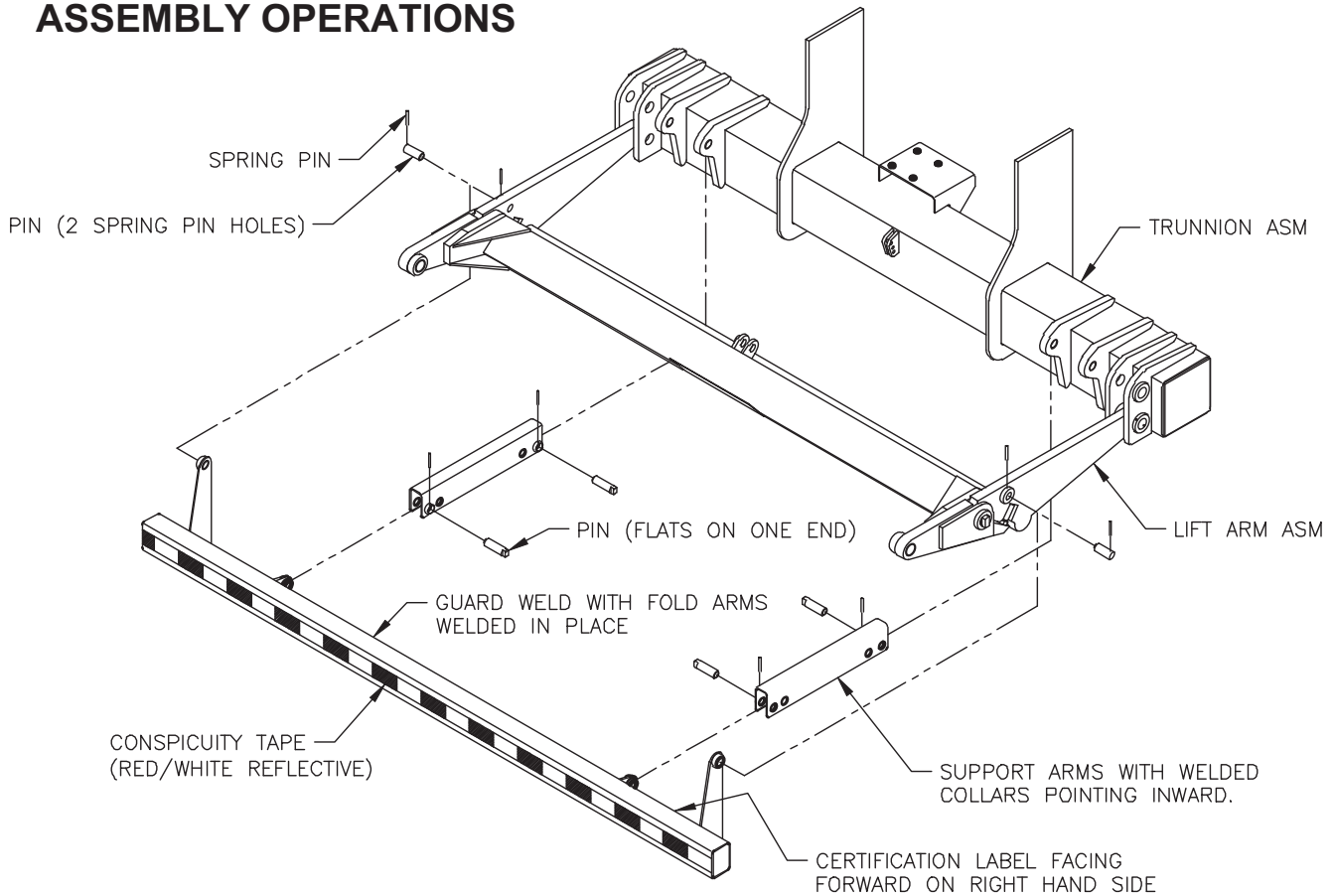


FIG. 3

STEP 8. Operate the liftgate fully through all possible positions to make sure operation is not affected by guard mounting and make sure guard does not interfere with dock bumpers or the ground. **DO NOT** cut guard tube ends off for clearance purposes. End of guard tube must be within 4.00 inches of outside of body to be compliant with DOT standards.

STEP 9. Check to make sure a portion of the guard tube is within the rectangular boundary as shown in figure 4.

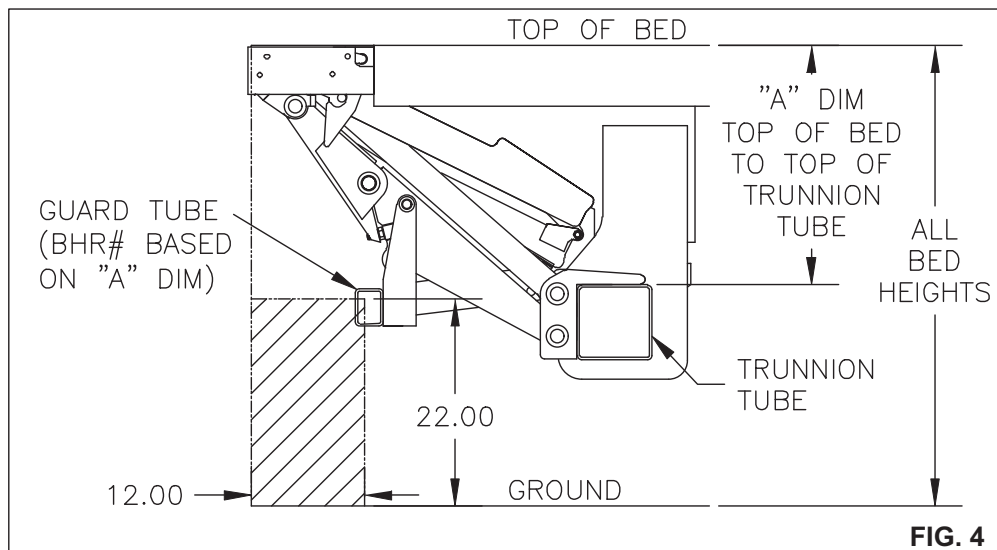


FIG. 4

STEP 10. If no interference problems are encountered, finish weld all welds which were initially tack welded.

STEP 11. After painting is complete, apply the conspicuity tape as shown in figure 3.